



Olympus

MD17-4282

x MD15-2104 x Mollerin Rock 13-0022

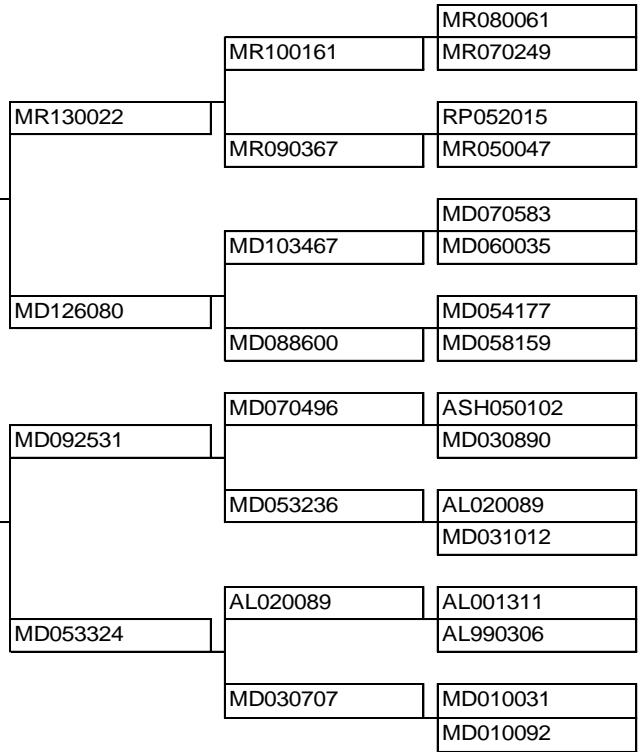
A well bred sire with Majestic blood on his sires maternal side and Empire blood on his dams paternal side. 4282 is a compact, deep bodied early maturing sire with an excellent twist. He carries a long stapled , deep crimping, lustrous, even 64s quality fleece. He's in the top 10% of the breed for fleece weight & index. 4282 has excellent conformation and is free of blemishes.



MD174282

Pedigree Details	
Export Tag:	5100042017174282
Family:	Olympus
Sex:	Ram
Date of Birth:	30/04/2017
Conception:	Natural
Birth Type:	Single

Sire Information	
MD152104	
Dam Information	
MD125402	



ASBV's – Highlighted in **BLUE** are the **Top 10%** and **GREEN** are the **Top 20%** for that trait, for the whole breed.

WWT	PWWT	PEMD	PFAT	YCFW	YFD	YDCV	Base Index
4.9	5.5	1.1	0.4	17.1	-0.3	0.2	159.9

Contact Details:

Macquarie Dohne Stud

Stud Master: John Nadin

"Carinya", 247L Dunedoo Rd,

Ballimore NSW 2830

+61 427 474 610

john@macquariedohnes.com.au

www.dohnes.com.au



Dr Gregory Peter McCann BVSc

MANZCVS

+61 499 865 120

gmccann@hwy.com.au

www.centralwestgenetics.com.au