

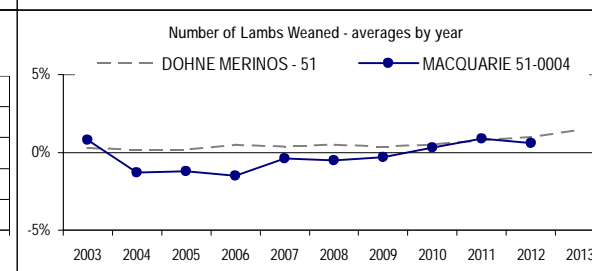
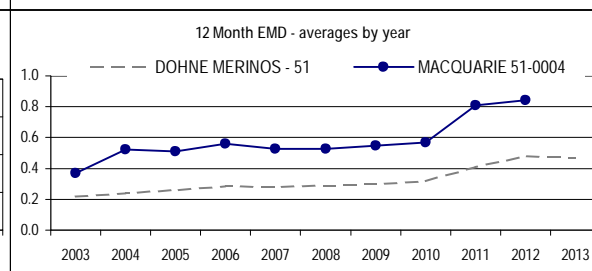
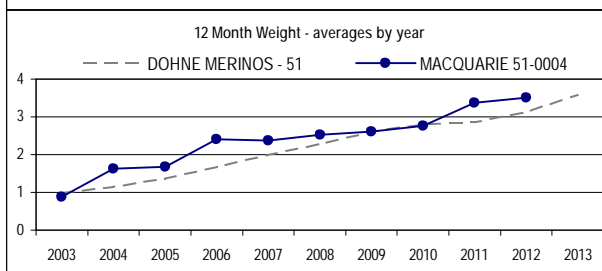
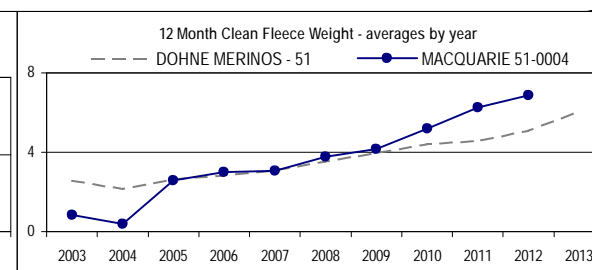
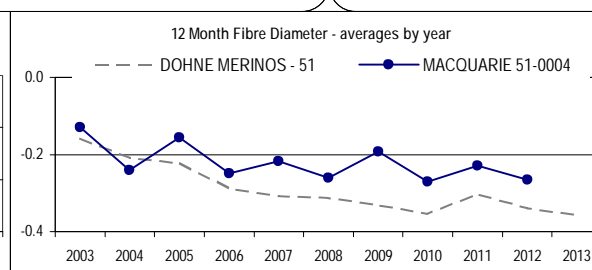
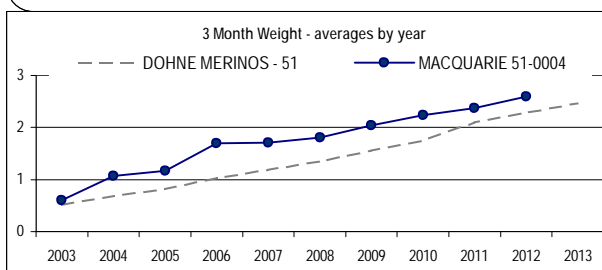
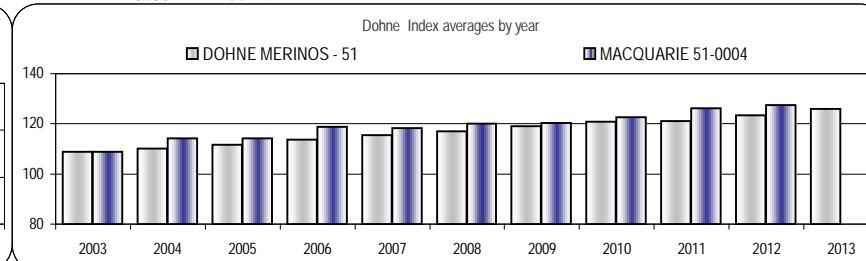
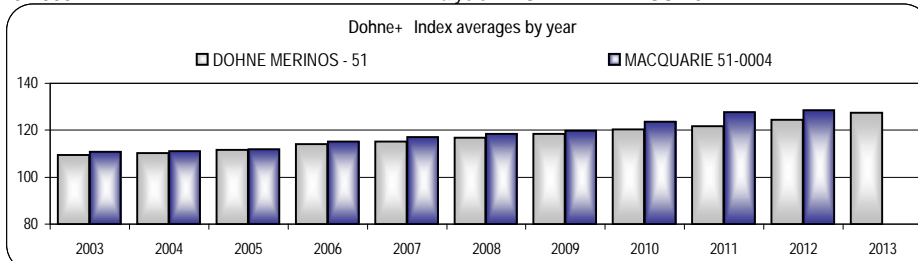
**MACQUARIE**  
**MACQUARIE ARTIFICIAL BREEDERS**



51-0004

Analysis : **DOHNE MERINOS - 51**

Dated : 7 Jul 14



MACQUARIE 51-0004													Dohne+	Dohne	Counts
	Ywt	Yfd	Ycfw%	Yfdcv%	Ysl	Yss	Nlw%	Ywec%	Ywt	Yfat	Yemd				
2004	1.6	-0.2	0.4	-0.1	0.0	0.0	-1.3	-2	1.6	-0.04	0.52	<b>111.0</b>	114.2	1185	
2005	1.7	-0.2	2.6	-0.1	0.0	0.0	-1.2	3	1.7	0.00	0.51	<b>112.0</b>	114.2	1709	
2006	2.4	-0.2	3.0	-0.2	0.0	0.0	-1.5	1	2.4	0.04	0.56	<b>115.3</b>	118.9	1189	
2007	2.4	-0.2	3.1	-0.2	0.0	0.0	-0.4	1	2.4	0.06	0.53	<b>117.0</b>	118.4	1350	
2008	2.5	-0.3	3.8	-0.1	0.0	0.0	-0.5	2	2.5	0.09	0.53	<b>118.4</b>	120.0	1090	
2009	2.6	-0.2	4.2	-0.3	0.0	0.0	-0.3	6	2.6	0.05	0.55	<b>120.0</b>	120.4	913	
2010	2.8	-0.3	5.2	-0.2	0.0	0.0	0.3	5	2.8	0.06	0.57	<b>123.6</b>	122.7	1197	
2011	3.4	-0.2	6.3	-0.2	0.0	0.0	0.9	5	3.4	0.13	0.81	<b>127.7</b>	126.2	865	
2012	3.5	-0.3	6.9	-0.2	0.0	0.0	0.6	4	3.5	0.16	0.84	<b>128.6</b>	127.5	1527	
2013														0	



Flock Linkage	
Fleece	Yes
Wts	Yes
Carcase	Yes
Wec	No
Reproduction	Yes

Reports are prepared using data supplied by breeders and/or accredited operators. We cannot guarantee the accuracy of this data. ASBV's are designed to estimate genetic merit of animals from the data supplied. The reports are provided to assist breeders but no liability is accepted for the outcome resulting from the use of this information.