

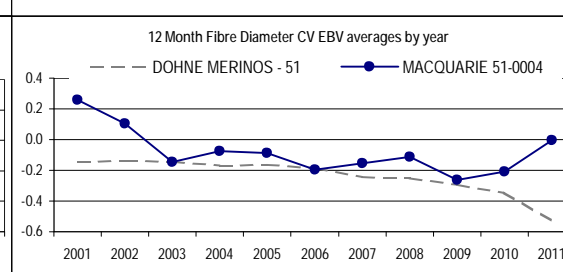
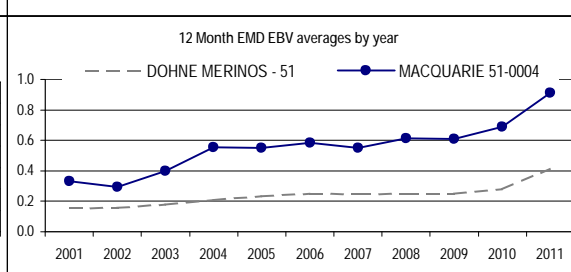
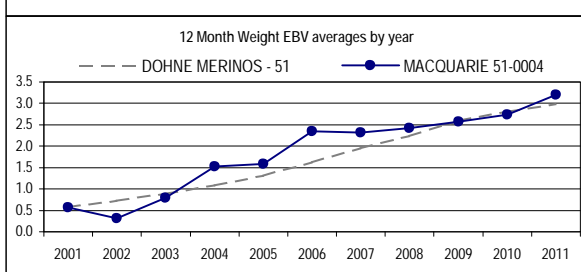
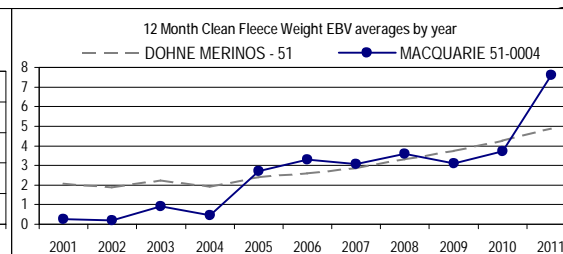
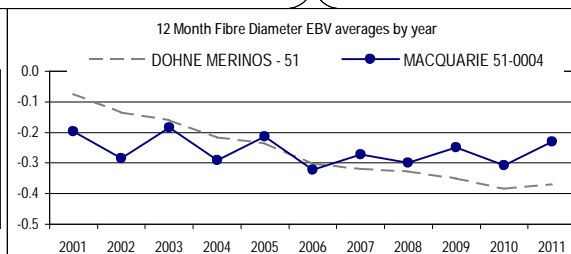
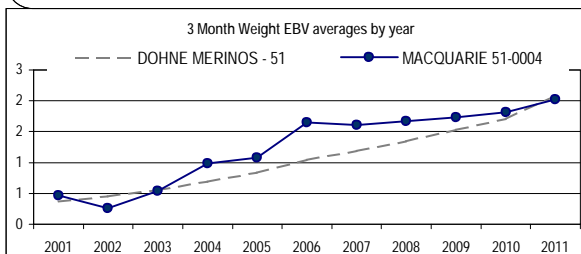
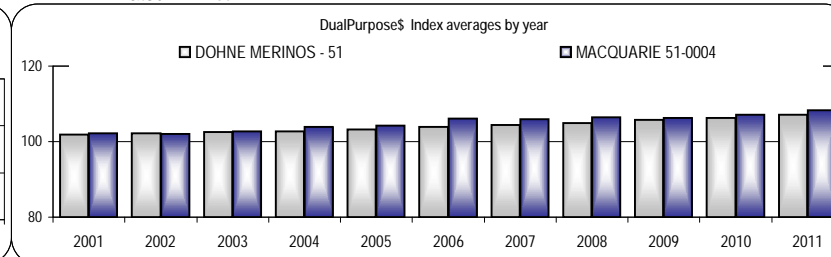
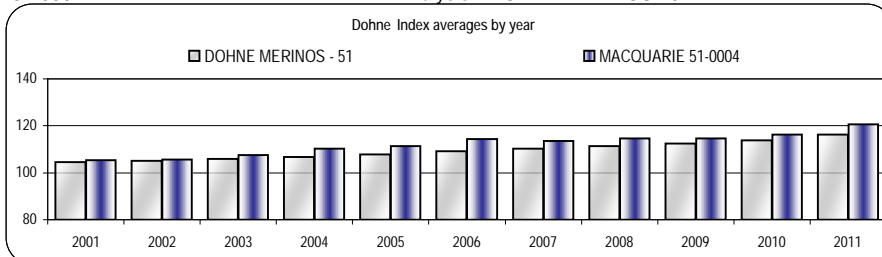
MACQUARIE
MACQUARIE ARTIFICIAL BREEDERS

51-0004

Analysis : **DOHNE MERINOS - 51**

Dated : 1 Jun 12

SHEEP GENETICS



MACQUARIE 51-0004														
	Ywt	Yfd	Ycfw%	Yfdcv%	Ysl	Yss	Nlw%	Ywec%	Ywt	Yfat	Yemd	Dohne	DP\$	Counts
2002	0.3	-0.3	0.2	0.1	0.0	0.0	0.0	5	0.3	-0.14	0.30	105.6	102.0	451
2003	0.8	-0.2	0.9	-0.1	0.0	0.0	0.0	5	0.8	-0.10	0.40	107.5	102.7	560
2004	1.5	-0.3	0.5	-0.1	0.0	0.0	0.0	0	1.5	-0.04	0.56	110.3	103.9	1185
2005	1.6	-0.2	2.7	-0.1	0.0	0.0	0.0	3	1.6	0.01	0.55	111.4	104.2	1709
2006	2.3	-0.3	3.3	-0.2	0.0	0.0	0.0	2	2.3	0.06	0.59	114.5	106.2	1189
2007	2.3	-0.3	3.1	-0.2	0.0	0.0	0.0	2	2.3	0.05	0.55	113.7	106.0	1350
2008	2.4	-0.3	3.6	-0.1	0.0	0.0	0.0	1	2.4	0.11	0.61	114.6	106.4	1090
2009	2.6	-0.2	3.1	-0.3	0.0	0.0	0.0	2	2.6	0.07	0.61	114.5	106.4	913
2010	2.7	-0.3	3.7	-0.2	0.0	0.0	0.0	2	2.7	0.08	0.69	116.2	107.0	1197
2011	3.2	-0.2	7.6	0.0	0.0	0.0	0.0	4	3.2	0.14	0.91	120.7	108.3	428



Linkage	
Fleece	Yes
Wts	Yes
Carcase	Yes
Wec	No
Reproduction	No

Reports are prepared using data supplied by breeders and/or accredited operators. We cannot guarantee the accuracy of this data. ASBV's are designed to estimate genetic merit of animals from the data supplied. The reports are provided to assist breeders but no liability is accepted for the outcome resulting from the use of this information.